






# GENLISA™ Human SARS-CoV-2 (Covid-19) Nucleoprotein Antigen Quantitative ELISA

**REF** : KBVH015-11

Ver 1.3

**RUO**

Enzyme Immunoassay for the Quantitative Antigen Determination of SARS-CoV-2 (Covid-19) Nucleoprotein in human serum and plasma and cell culture supernatant

<b>RUO</b>	For Research Use Only	<b>REF</b>	Catalog Number
	Store At	<b>LOT</b>	Batch Code
	Manufactured By		Biological Risk
	Expiry Date		Consult Operating Instructions

*For Research Use Only. Purchase does not include or carry the right to resell or transfer this product either as a stand-alone product or as a component of another product. Any use of this product other than the permitted use without the express written authorization of KRISHGEN BioSystems is strictly prohibited.*

**REF** KBVH015-11

 96 tests

**KRISHGEN BioSystems** For US/Europe Customers: toll free +1(888)-970-0827 | tel +1(562)-568-5005  
For Asia/India Customers: tel +91(22)-49198700  
Email: sales@krishgen.com | http://www.krishgen.com

**Introduction:**

The GENLISA™ ELISA kits are used for assessing the specific biomarker in samples analytes which may be serum, plasma and cell culture supernatant as validated with the kit. The kit employs a sandwich ELISA technique which leads to a higher specificity and increased sensitivity compared to conventional competitive ELISA kits which employ only one antibody. Double antibodies are used in this kit.

**Intended Use:**

The GENLISA™ Human SARS-CoV-2 (Covid-19) nucleoprotein Antigen ELISA kit is used as an analytical tool for quantitative antigen determination of Human SARS-CoV-2 (Covid-19) nucleocapsid proteins in human serum and plasma and cell culture supernatant.

**Principle:**

The method employs sandwich ELISA technique. Monoclonal antibodies are pre-coated onto microwells. Samples and standards are pipetted into microwells and Human SARS-CoV-2 (Covid-19) nucleoproteins present in the sample are bound by the capture antibodies. After incubation the wells are washed and followed by HRP- conjugated Detection Antibody is pipetted and incubated to form a complex. After washing microwells in order to remove any non-specific binding, the substrate solution (TMB) is added to microwells and color develops proportionally to the amount of Human SARS-CoV-2 (Covid-19) nucleoproteins in the sample. Color development is then stopped by addition of stop solution. Absorbance is measured at 450 nm.

**Materials Provided:**

Part	Description	Qty
SARS-CoV-2 (Covid-19) nucleoprotein Antibody Coated Microtiter Plate	96 well polystyrene microplate (12 strips of 8 wells) coated with SARS-CoV-2 (Covid-19) nucleoprotein Antibody	1 x 96 wells
Human SARS-CoV-2 Nucleoprotein Standard	Lyophilized Human SARS-CoV-2 Nucleoprotein Standard Concentration – 1000 AU/ml	2 vials
SARS-CoV-2 (Covid-19) Antibody:HRP Conjugate	SARS-CoV-2 (Covid-19) Antibody:HRP Conjugate prepared in buffer with protein stabilizer and preservatives 0.02% methylisothiazolone and 0.02% bromonitrodioxane.	12 ml
(1X) Sample Diluent	Buffered protein base with protein stabilizer and preservatives 0.02% methylisothiazolone and 0.02% bromonitrodioxane.	50 ml
(1X) Standard Diluent	Buffered protein base with protein stabilizer and preservatives 0.02% methylisothiazolone and 0.02% bromonitrodioxane with 1:10 dilution human serum	10 ml
(20X) Wash Buffer	20-fold concentrated solution of buffered surfactant with preservative thiomersol < 0.01%. May turn yellow over time.	25 ml
TMB Substrate	Stabilized Chromogen	12 ml
Stop Solution	2N Sulfuric Acid	12 ml
Instruction Manual		1 no

**Materials to be provided by the End-User:**

1. Microtiter Plate Reader able to measure absorbance at 450 nm.
2. Adjustable pipettes and multichannel pipettor to measure volumes ranging from 25 ul to 1000 ul
3. Deionized (DI) water
4. Wash bottle or automated microplate washer
5. Graph paper or software for data analysis
6. Timer
7. Absorbent Paper

**Handling/Storage:**

1. Store main kit components at indicated temperature.
2. Before using, bring all components to room temperature (18-25°C). Upon assay completion return all components to appropriate storage conditions.
3. The Substrate is light-sensitive and should be protected from direct sunlight or UV sources.

**Health Hazard Warnings:**

Reagents that contain preservatives may be harmful if ingested, inhaled or absorbed through the skin.

**Sample Preparation and Storage:**

Specimens should be clear and non-hemolyzed. Samples should be run at a number of dilutions to ensure accurate quantitation.

Blood is taken by venipuncture. Serum is separated after clotting by centrifugation. Plasma can be used, too. Lipaemic, hemolytic or contaminated samples should not be run. Repeated freezing and thawing should be avoided.

Samples should be diluted 1:10 (v/v) for optimal recovery, (for example 1 ul sample + 9 ul assay diluent) prior to assay. In cases where matrix interferences is under or over observed, the samples may be diluted with Assay Diluent accordingly.

The samples may be kept at 2-8°C for up to three days. For long-term storage please store at -20°C.

**Note:** Grossly hemolyzed samples are not suitable for use in this assay

Cell Culture Supernates - Remove particulates by centrifugation and assay immediately or aliquot and store samples at -20°C or lower temperature. Avoid repeated freeze-thaw cycles. If the use of original supernate sample or low dilution (<5 fold) are necessary due to the expected low concentration of antigen supernates need be adjust to neutral pH condition before assay.

**Note:** The sample should be diluted to within the working range of the assay in 1X Assay Diluent. The exact dilution must be determined based on the concentration of specific target in individual samples.

**Reagent Preparation (all reagents should be diluted immediately prior to use):**

1. Label any aliquots made with the kit Lot No and Expiration date and store it at appropriate conditions mentioned.
2. Bring all reagents to Room Temperature before use.
3. To make **Wash Buffer (1X)**; dilute **25 ml** of **20X Wash Buffer** in **475 ml of DI water**.
4. **Standards Preparation:** Reconstitute the concentrated Standard lyophilized vial with 1 ml of Standard Diluent to obtain a concentration of 1000 AU/ml. Keep the vial for 15 mins with gentle agitation before making further dilutions. Dilute 360 ul of original **Standard (1000 AU/ml)** with 140 ul of Standard Diluent to generate a **720 AU/ml Standard Solution**. Prepare further **Standards** by serially diluting the Standard Solution as per the below table. Use the Standard Diluent as the Zero Standards (Standard No.0).

Standard Concentration	Standard Vial	Dilution Particulars
1000 AU/ml	Original Standard	Original Standard provided in the Kit + 1ml of Standard Diluent
720 AU/ml	Standard No.7	360 ul Original Standard (1000 AU/ml) + 140 ul Standard Diluent
360 AU/ml	Standard No.6	250 ul Standard No.7 + 250 ul Standard Diluent
180 AU/ml	Standard No.5	250 ul Standard No.6 + 250 ul Standard Diluent
90 AU/ml	Standard No.4	250 ul Standard No.5 + 250 ul Standard Diluent
60 AU/ml	Standard No.3	333.4 ul Standard No.4 + 166.6 ul Standard Diluent

30 AU/ml	Standard No.2	250 ul Standard No.3 + 250 ul Standard Diluent
15 AU/ml	Standard No.1	250 ul Standard No.2 + 250 ul Standard Diluent
0 AU/ml	Standard No. 0	Only Standard Diluent

**Procedural Notes:**

1. In order to achieve good assay reproducibility and sensitivity, proper washing of the plates to remove excess un-reacted reagents is essential.
2. Avoid assay of Samples containing sodium azide ( $\text{NaN}_3$ ), as it could destroy the HRP activity resulting in erroneous results for the presence of Human SARS-CoV-2 (Covid-19).
3. It is recommended that the Standards and Samples be assayed in duplicates.
4. Maintain a repetitive timing sequence from well to well for all the steps to ensure that the incubation timings are same for each well.
5. If the Substrate has a distinct blue color prior to use it may have been contaminated and use of such substrate can lead to compromisation of the sensitivity of the assay.
6. The plates should be read within 30 minutes after adding the Stop Solution.
7. Make a work list in order to identify the location of Standards and Samples.

**Assay Procedure:**

1. Pipette **100 ul** of **Standards** and **diluted Samples** to the respective wells.
2. Seal the plate and incubate for 1 hour at 37°C shaking (200 rpm).
3. Aspirate and wash plate 4 times with **Wash Buffer (1X)** and blot residual buffer by firmly tapping plate upside down on absorbent paper. Wipe of any liquid from the bottom outside of the microtiter wells as any residue can interfere in the reading step. All the washes should be performed similarly.
4. Add **100 ul** of **SARS-CoV-2 Antibody:HRP Conjugate** to each well.
5. Seal the plate and incubate for 1 hour at 37°C shaking (200 rpm).
6. Wash plate 4 times with **Wash Buffer (1X)** as in step 3.
7. Pipette **100 ul** of **TMB Substrate solution**.
8. Incubate in the dark for 30 minutes at Room Temperature.
9. Stop reaction by adding **100 ul** of **Stop Solution** to each well.
10. Read absorbance at 450 nm within 30 minutes of stopping reaction.

**Calculation of Results:**

Determine the Mean Absorbance for each set of duplicate Standards and Samples. Using Graph Paper, plot the average value (absorbance 450nm) of each standard on the Y-axis versus the corresponding concentration of the standards on the X-axis. Draw the best fit curve through the standard points. To determine the unknown Human SARS-CoV-2 (Covid-19) nucleoprotein concentrations, find the unknown's Mean Absorbance value on the Y-axis and draw a horizontal line to the standard curve.

At the point of intersection, draw a vertical line to the X-axis and read the Human SARS-CoV-2 (Covid-19) nucleoprotein Concentration.

**Note:**

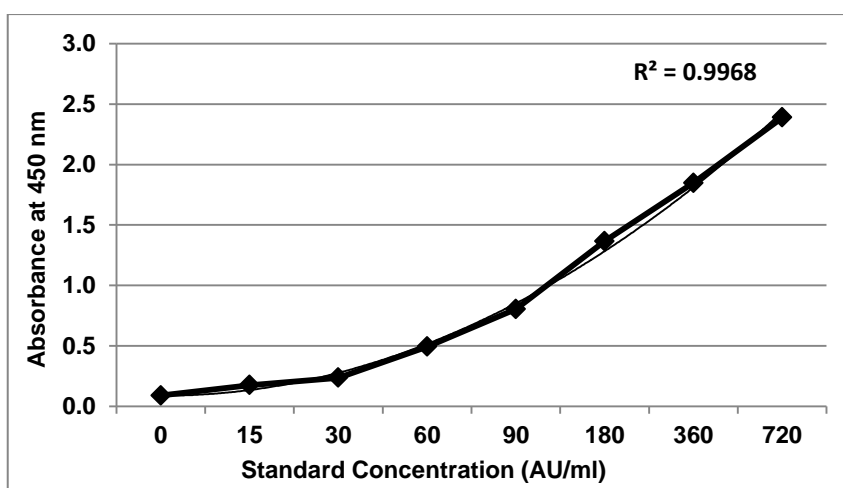
It is recommended to repeat the assay at a different dilution factor in the following cases:

- If the sample absorbance value is below the first standard.
- If the absorbance value is equivalent or higher than the 720 AU/ml standard.

Typical Data

Standards provided (AU/ml)	Abs A	Abs B	Mean Abs
0	0.083	0.097	0.090
15	0.167	0.184	0.175
30	0.234	0.238	0.236
60	0.480	0.506	0.493
90	0.813	0.796	0.804
180	1.398	1.332	1.365
360	1.836	1.858	1.847
720	2.351	2.426	2.388

Typical Graph



**Quality Control:**

It is recommended that for each laboratory assay appropriate quality control samples in each run to be used to ensure that all reagents and procedures are correct.

**Performance Characteristics of the Kit:**

**Standard Calibration Range:**

0 - 720 AU/ml

**Sensitivity:**

The capture antibodies used in the kit are specific against 2019-nCoV Coronavirus nucleocapsid and has 100% cross-reactivity with SARS-CoV Nucleocapsid Protein.

A DNA sequence encoding the SARS-CoV (isolate:Tor2) nucleoprotein (NP\_828858.1) (Met1-Ala422) was expressed in baculovirus-insect cells and is used as standards in the kit.

**Limit Of Detection:**

It is defined as the lowest detectable concentration corresponding to a signal of Mean of '0' standard plus 2\* SD.

10 replicates of '0' standards were evaluated and the LOD was found to be less than 7.5 AU/ml (may also be expressed as mg/ml; being total protein estimated).

**Precision:**

**Intra-Assay**

Three samples of known concentration were tested five times on one plate to assess intra-assay precision.

**Inter-Assay:** Three samples of known concentration were tested in five separate assays to assess inter-assay precision.

	<b>Intra-Assay</b>	<b>Inter-Assay</b>
CV (%)	< 10%	< 15%

**Spike and Recovery:**

SARS-CoV-2 (Covid-19) nucleocapsid proteins were spiked at different levels to measure mean recovery.

<b>Sample</b>	<b>Mean % Recovery</b>	<b>Range</b>
Serum (n=3)	100.8	75-125 %
Cell Culture Supernates (n=3)	106	80-120 %

**Safety Precautions:**

- **This kit is For Research Use Only.** Follow the working instructions carefully.
- The expiration dates stated on the kit are to be observed. The same relates to the stability stated for reagents
- Do not use or mix reagents from different lots.
- Do not use reagents from other manufacturers.
- Avoid time shift during pipetting of reagents.
- All reagents should be kept in the original shipping container.
- Some of the reagents contain small amount of sodium azide (< 0.1 % w/w) as preservative. They must not be swallowed or allowed to come into contact with skin or mucosa.
- Source materials maybe derived from human body fluids or organs used in the preparation of this kit were tested and found negative for HBsAg and HIV as well as for HCV antibodies. However, no known test guarantees the absence of such viral agents. Therefore, handle all components and all patient samples as if potentially hazardous.
- Since the kit contains potentially hazardous materials, the following precautions should be observed
  - Do not smoke, eat or drink while handling kit material
  - Always use protective gloves
  - Never pipette material by mouth
  - Wipe up spills promptly, washing the affected surface thoroughly with a decontaminant.
- In any case GLP should be applied with all general and individual regulations to the use of this kit.

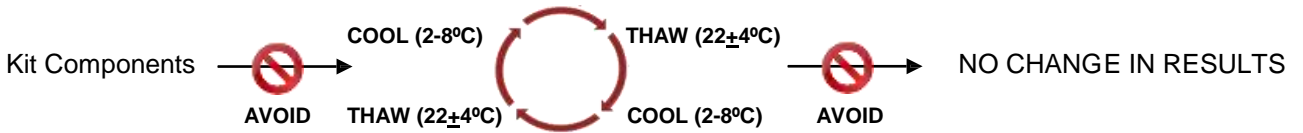


**SCHEMATIC ASSAY PROCEDURE**

1. Remove all components, 30 minutes before adding into the assay plate.



2. Avoid repeated cool-thaw of the components as there will be a loss of activity and this can affect the results.



3. Pipette **100 ul Standards and diluted Samples** into the respective wells.

4. Cover plate and **incubate** for at 37°C shaking at 200 rpm.

5. Aspirate and wash wells 4 times with **Wash Buffer (1X)**.

6. Pipette **100 ul SARS-CoV-2 Antibody:HRP Conjugate** into each well.

7. Cover plate and **incubate** for at 37°C shaking at 200 rpm.

8. Aspirate and wash wells 4 times with **(1X) Wash Buffer**.

9. Pipette **100 ul TMB Substrate** into each well.

10. Cover plate and **incubate** for at Room Temperature.

11. Pipette **100 ul Stop Solution** into each well.

12. Read absorbance at 450nm with a microplate reader within of stopping reaction.



**Typical Example of a Work List**

Well #	Contents	Absorbance at 450nm	Mean Absorbance	Results
1A 2A	0 Standard 0 Standard			
1B 2B	15 AU/ml 15 AU/ml			
1C 2C	30 AU/ml 30 AU/ml			
1D 2D	60 AU/ml 60 AU/ml			
1E 2E	90 AU/ml 90 AU/ml			
1F 2F	180 AU/ml 180 AU/ml			
1G 2G	360 AU/ml 360 AU/ml			
1H 2H	720 AU/ml 720 AU/ml			
3A 4A	<i>Sample</i>			
3B 4B	<i>Sample</i>			

**LIMITED WARRANTY**

Krishgen Biosystems does not warrant against damages or defects arising in shipping or handling, or out of accident or improper or abnormal use of the Products; against defects in products or components not manufactured by Krishgen Biosystems, or against damages resulting from such non-Krishgen Biosystems made products or components. Krishgen Biosystems passes on to customer the warranty it received (if any) from the maker thereof of such non Krishgen made products or components.

This warranty also does not apply to Products to which changes or modifications have been made or attempted by persons other than pursuant to written authorization by Krishgen Biosystems.

THIS WARRANTY IS EXCLUSIVE. The sole and exclusive obligation of Krishgen Biosystems shall be to repair or replace the defective Products in the manner and for the period provided above. Krishgen Biosystems shall not have any other obligation with respect to the Products or any part thereof, whether based on contract, tort, and strict liability or otherwise. Under no circumstances, whether based on this Limited Warranty or otherwise, shall Krishgen Biosystems be liable for incidental, special, or consequential damages.

This Limited Warranty states the entire obligation of Krishgen Biosystems with respect to the Products. If any part of this Limited Warranty is determined to be void or illegal, the remainder shall remain in full force and effect.

Krishgen Biosystems. 2021

**THANK YOU FOR USING KRISHGEN PRODUCT!**